

BUYING OLD PHOTOS

Albums, Dags, Tintypes, CDV's,
Snapshots, Travel, Sports,
Military, Municipal, Postcards,
Books on Photography, etc.
jcvp@cox.net 401-421-2628

High Museum Expands Collections Across All Departments In 2012

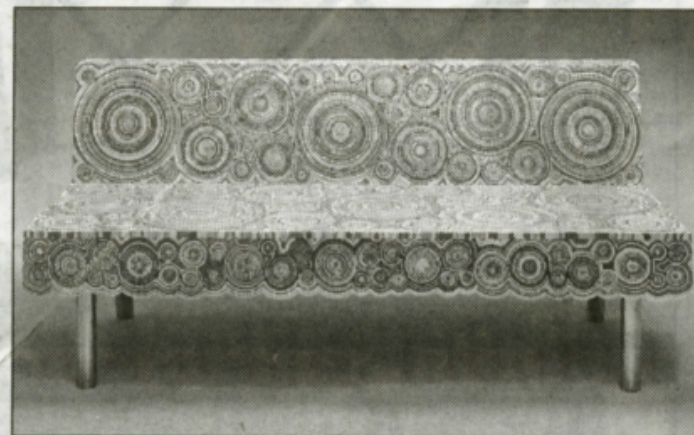
ATLANTA, GA. — The High Museum of Art continued to expand its collection in 2012 with the addition of 637 works of art in all seven of the muse-

um's curatorial departments. Acquisition highlights include a watercolor by Georgia O'Keeffe, an oil painting by Milton Avery and Sushi sofa, a sofa made up of concentric, rainbow colored circles by designer Fernando Campana.

Several artists who are long-time friends of the High Museum donated works to the collection — they include Alex Katz, KAWS, Kiki Smith and Kael Alford, a photographer who was commissioned for this year's iteration of the High's "Picturing the South" exhibition series. Twenty-one works by Atlanta-based artists, including Ben Roosevelt, Lucinda Bunnen, Freddie Styles, Nathan Sharratt and Ruth Dusseault, were also added to the collection.

Highlights include a 1922 watercolor on paper by Georgia O'Keeffe, "Seaweed No. II"; a mixed media piece by Rashid Johnson, "Rumble," 2011; "Carriage," a 1990 oil on canvas by Martha Diamond, donated by Alex Katz; and five works from 2000 to 2011 by Kiki Smith, donated by the artist.

The decorative arts and design category is enhanced by 16 acquisitions, including a bench made in 1990 by Richard Tuttle named "The Nature of the Gun," donated by the artist, and a crochet



Designed by Fernando Campana (Brazilian, b 1961), "Sushi Sofa," designed 2010, manufactured 2012, carpet, rubber, EVA, fabric and stainless steel, 29½ by 63 by 29 ½ inches. High Museum of Atlanta, purchased with funds from the decorative arts endowment.

chair by Marcel Wanders, 2006.

The photography department received 37 prints by Ralph Gibson, given by the Kuniansky family; 21 large-scale photographs from Richard Misrach's 1998 "Cancer Alley" series; and "Lightning Fields 182," a 2009 photograph by Hiroshi Sugimoto, to name a few.

Folk art highlights comprise 44 pieces such as "Lincoln at Frogmore" a circa 1960 painting by Sam Doyle, and "Brown Cityscape," a 1982 earth pigments on panel painting by

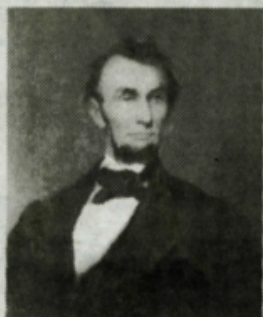
Jimmy Lee Sudduth.

A Nineteenth Century wood and metal figure by a Fang artist from Gabon, "Fang Female Reliquary Figure, Byeri," and a seated male figure and seated mother and child, a wood figure from the late Nineteenth or early Twentieth Century by a Baule artist from the Ivory Coast, are just two of the acquisitions in the African art collection.

The High Museum is at 1280 Peachtree Street NE. For information, www.high.org or 404-733-4444.

MADE IN AMERICA

February 1 through
March 31, 2013



Artist Unknown



Daniel Garber



George Luks

* We'll pay the Sales Tax for you!

Gratz Gallery

CONSERVATION STUDIO
Investment is a Fine Art

68 S. Main St., Doylestown, PA 18901

(215) 348.2500 / www.gratzgallery.com

Wed. through Sat. 10 - 6, Sun. 12 - 6, and by appointment

"High Museum Expands Collections Across All Departments In 2012", *Antiques and the Arts Weekly*. February 22, 2013.

FRIEDMAN BENDA 515 W 26TH STREET NEW YORK NY 10001

FRIEDMANBENDA.COM TELEPHONE 212 239 8700 FAX 212 239 8760