

INTERIOR DESIGN®

February 1, 2013

Against the Grain: Wood in Contemporary Art, Craft, and Design

Annie Block -- Interior Design, 2/1/2013 2:00:00 AM



[VIEW THE SLIDESHOW](#)

See a well-worn medium in a whole new light in **"Against the Grain: Wood in Contemporary Art, Craft and Design"** at New York's Museum of Arts and Design, March 19 to July 7. The show explores cutting-edge conceptual and technical trends in woodworking via more than 75 installations, sculptures, objects, and furniture pieces by 57 global artists and designers, including Martin Puryear, Maarten Baas, and Ai Weiwei.

The exhibition premiered at the Mint Museum in Charlotte, North Carolina, last September, but several works have been added specifically for the New York run. Among them are: Nina Bruun's ethereal ribbonlike perch, a dramatic split and cantilevered shelf by Joseph Walsh, Laurel Roth's sheep skull blinged out with gold leaf and Swarovski crystal, Siamese twin-style Windsor chairs by Christopher Kurtz, and Ricky Swallow's sculpture that, amazingly, looks just like a beanbag.

Posted: 02/01/2013

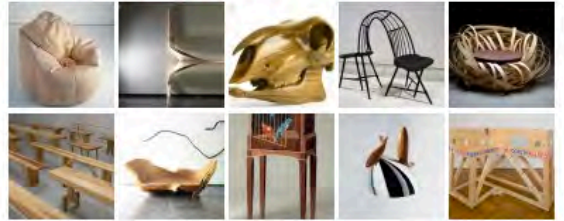


Ricky Swallow's Come Together, in laminated jelutong, appears in "Against the Grain: Wood in Contemporary Art, Craft and Design" at the Museum of Arts and Design in New York.

[1](#) [2](#) [3](#) [4](#) [5](#) [6](#) [7](#) [8](#) [9](#) [10](#) [11](#) [12](#)

WOOD YOU BELIEVE? NEW YORK'S MUSEUM OF ARTS AND DESIGN PRESENTS "AGAINST THE GRAIN: WOOD IN CONTEMPORARY ART, CRAFT, AND DESIGN"

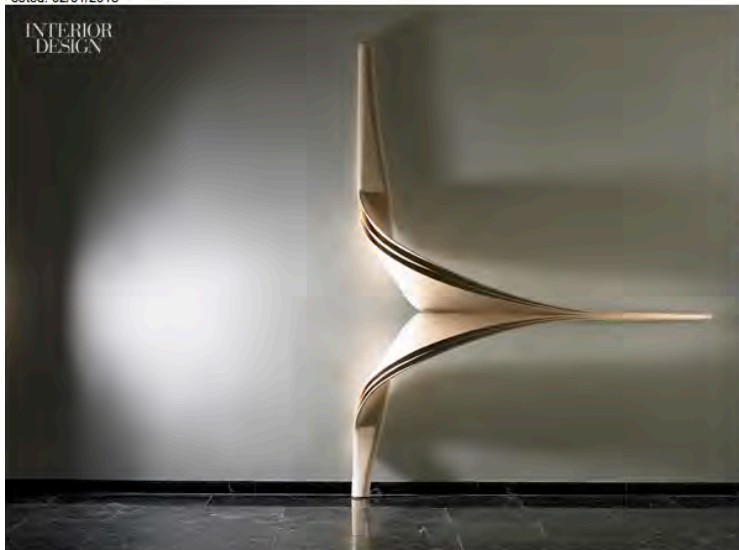
See a well-worn medium in a whole new light in "Against the Grain: Wood in Contemporary Art, Craft and Design" at New York's Museum of Arts and Design, March 19 to July 7. [+read the article](#)



Page 1 2



Posted: 02/01/2013



Enigma in ash by Joseph Walsh.

[1](#) [2](#) [3](#) [4](#) [5](#) [6](#) [7](#) [8](#) [9](#) [10](#) [11](#) [12](#)

Posted: 02/01/2013



Laurel Roth's Food #3-Sheep in vera wood, gold leaf, and Swarovski crystal.

[1](#) [2](#) [3](#) [4](#) [5](#) [6](#) [7](#) [8](#) [9](#) [10](#) [11](#) [12](#)

Posted: 02/01/2013



Christopher Kurtz's (A)Typical Windsor Form in ash, oak, pine, and milk paint.

<1 2 3 4 5 6 7 8 9 10 11 12>

Posted: 02/01/2013



Nest in birch and cotton by Nina Bruun.

<1 2 3 4 5 6 7 8 9 10 11 12>

Posted: 02/01/2013



ONLINE EXCLUSIVE. A Small Gathering of Utopian Benches by Francis Cape.

<1 2 3 4 5 6 7 8 9 10 11 12>



ONLINE EXCLUSIVE. Hugo França's Chara bench in Pequi wood.

<1 2 3 4 5 6 7 8 9 10 11 12>



ONLINE EXCLUSIVE. Parrots, in wood, brass, mother-of-pearl, and stone, by Silas Kopf.

<1 2 3 4 5 6 7 8 9 10 11 12>



ONLINE EXCLUSIVE. Frank Gehry's Pto kettle for Alessi.

<1 2 3 4 5 6 7 8 9 10 11 12>



ONLINE EXCLUSIVE. William Pope.L's Coffin (Flag Box), 2008.

◀ 1 2 3 4 5 6 7 8 9 10 11 12 ▶



ONLINE EXCLUSIVE. Bud Latven's Tower 9 in Panamanian cocobolo and tiger maple wood.

◀ 1 2 3 4 5 6 7 8 9 10 11 12 ▶



ONLINE EXCLUSIVE. Yellow Pool House by Jackie Ferrara in stained basswood.

◀ 1 2 3 4 5 6 7 8 9 10 11 12 ▶