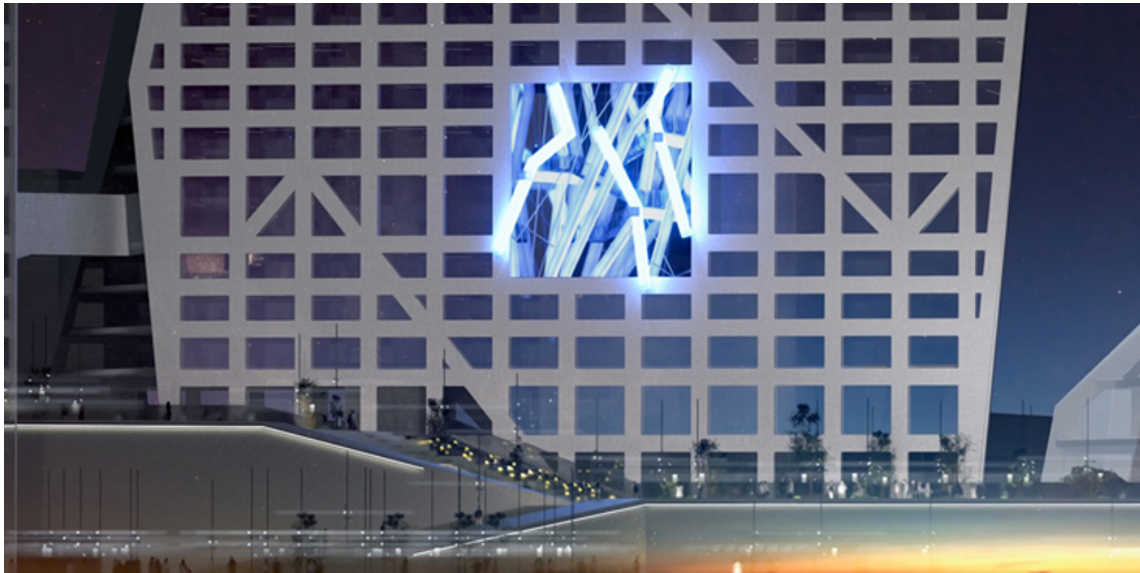


# A SPACE OF LIGHT



*(above) The Light Pavilion by Lebbeus Woods in collaboration with Christoph a. Kumpusch, in the Raffles City complex in Chengdu, China, by Steven Holl Architects.*

The Light Pavilion is designed to be an experimental space, that is, one that gives us the opportunity to experience a type of space we haven't experienced before. Whether it will be a pleasant or unpleasant experience; exciting or dull; uplifting or merely frightening; inspiring or depressing; worthwhile or a waste of time, is not determined in advance by the fulfillment of our familiar expectations, because we can have none, never having encountered such a space before. We shall simply have to go into the space and pass through it, perhaps more than once. That is the most crucial aspect of its experimental nature, and we—its transient inhabitants—are experimentalists in full partnership with the space's designers. Each of our experiences will be unique, personal.

Set within a more known three-dimensional geometry and framed by it, the Light Pavilion exerts its differences. Most apparently, the elements defining it do not follow the known, rectilinear geometry of its architectural setting. The columns supporting stairs and viewing platforms obey a geometry defined by a dynamic of movement. Their deviation from the rectilinear grid releases its spaces from static stability and sets them in motion, encouraging visitors to explore.

The structural columns articulating the Pavilion's interior spaces are illuminated from within and in the twilight and night hours visibly glow, creating a luminous space into which the solid architectural elements appear to merge. This quality is amplified by the mirrored surfaces enclosing the Pavilion, which visually extend its spaces infinitely. We might speculate that this new type of space stands somewhere between traditional architecture and the virtual environments of cyberspace, a domain we increasingly occupy in our homes and workplaces, but in the Light Pavilion with more emphasis on the physical than the mental or the virtual.

Wood, Lebbeus and Kumpusch, Christoph. "A SPACE OF LIGHT", *LW blog*, February 15, 2011

**FRIEDMAN BENDA** 515 W 26TH STREET NEW YORK NY 10001  
FRIEDMANBENDA.COM TELEPHONE 212 239 8700 FAX 212 239 8760

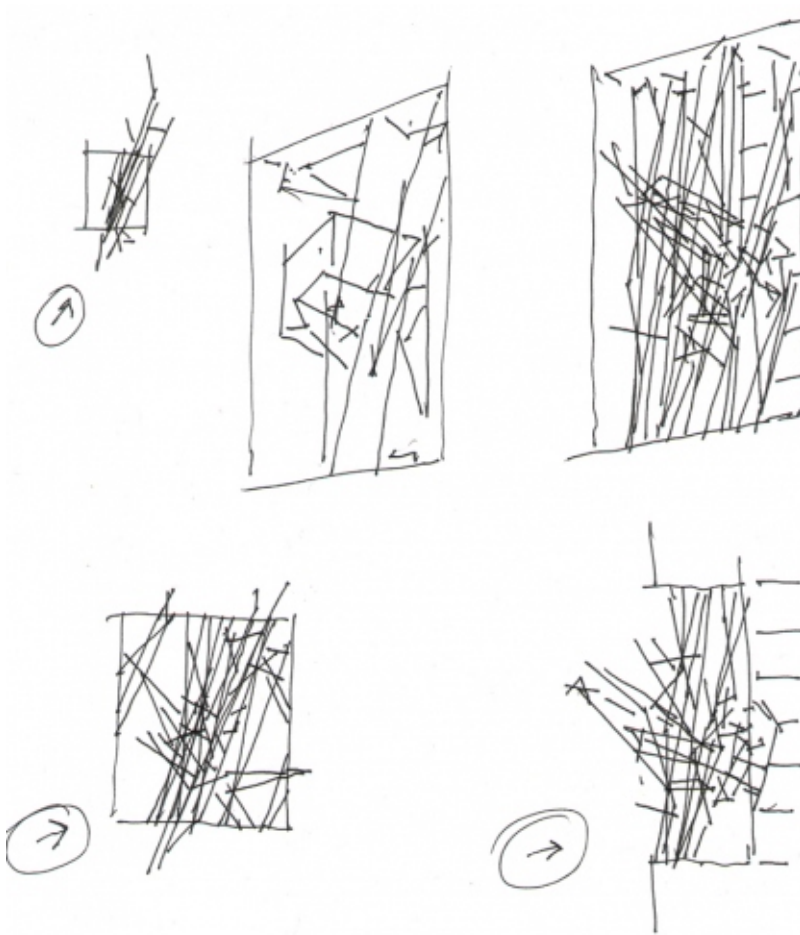
From distances across the city, the Pavilion is a beacon of light for the Raffles City complex. From within the buildings, and especially from the large public plaza between them, the glowing structure radiates subtly changing color symbolizing different holidays and times of day, month and year.

The space has been designed to expand the scope and depth of our experiences. That is its sole purpose, its only function. If one needed to give a reason to skeptics for creating such experimental spaces in the context of this large urban development project, it would be this: our rapidly changing world constantly confronts us with new challenges to our abilities to understand and to act, encouraging us to encounter new dimensions of experience.

**Lebbeus Woods**

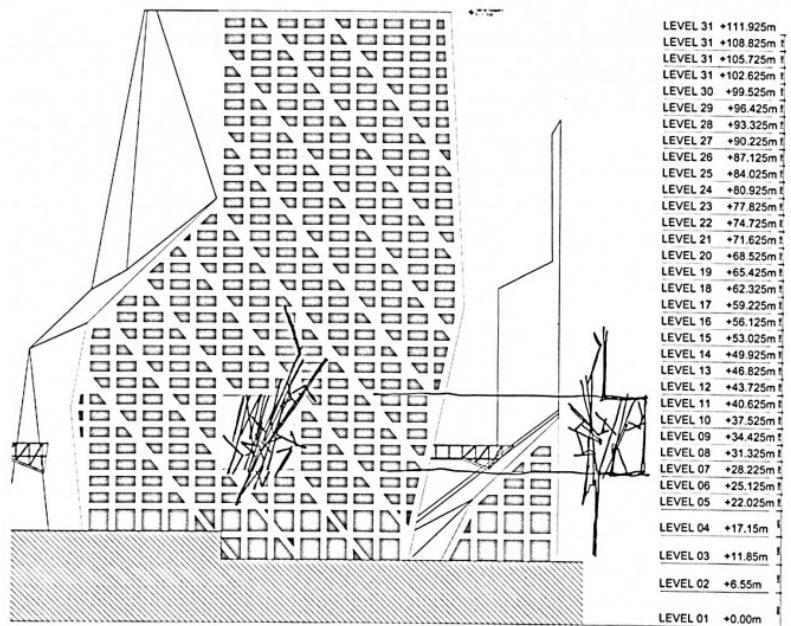
**Christoph a. Kumpusch**

*(below) Development of The Light Pavilion's design:*



Wood, Lebbeus and Kumpusch, Christoph. "A SPACE OF LIGHT", *LW blog*, February 15, 2011

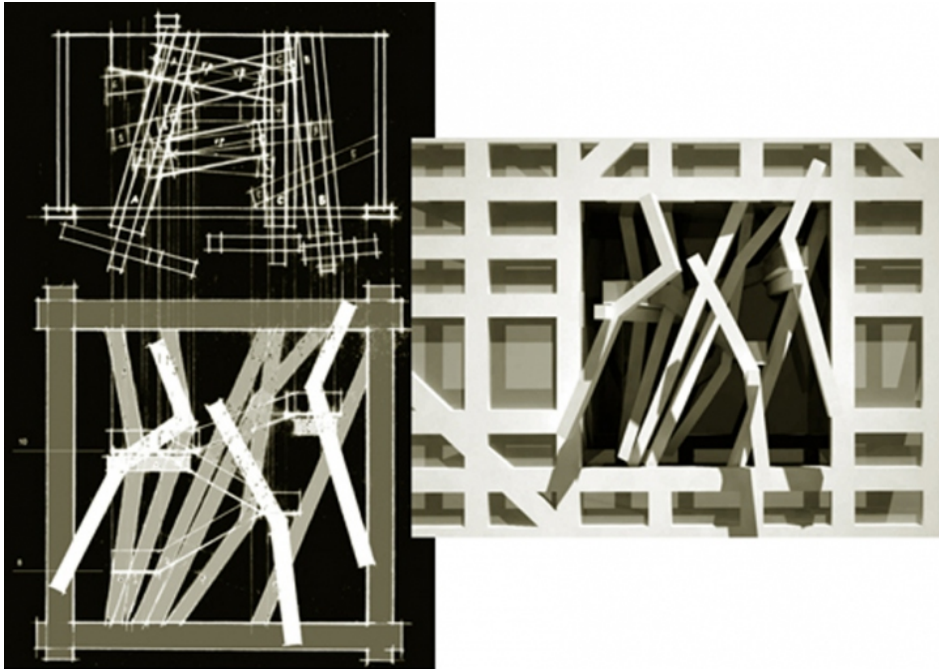
**FRIEDMAN BENDA** 515 W 26TH STREET NEW YORK NY 10001  
FRIEDMANBENDA.COM TELEPHONE 212 239 8700 FAX 212 239 8760



Wood, Lebbeus and Kumpusch, Christoph. "A SPACE OF LIGHT", *LW blog*, February 15, 2011

**FRIEDMAN BENDA** 515 W 26TH STREET NEW YORK NY 10001  
 FRIEDMANBENDA.COM TELEPHONE 212 239 8700 FAX 212 239 8760





#### COORDINATION CHART

NO.	1	2	3
101	101	101	101
102	102	102	102
103	103	103	103
104	104	104	104
105	105	105	105
106	106	106	106
107	107	107	107
108	108	108	108
109	109	109	109
110	110	110	110
111	111	111	111
112	112	112	112
113	113	113	113
114	114	114	114
115	115	115	115
116	116	116	116
117	117	117	117
118	118	118	118
119	119	119	119
120	120	120	120
121	121	121	121
122	122	122	122
123	123	123	123
124	124	124	124
125	125	125	125
126	126	126	126
127	127	127	127
128	128	128	128
129	129	129	129
130	130	130	130
131	131	131	131
132	132	132	132
133	133	133	133
134	134	134	134
135	135	135	135
136	136	136	136
137	137	137	137
138	138	138	138
139	139	139	139
140	140	140	140
141	141	141	141
142	142	142	142
143	143	143	143
144	144	144	144
145	145	145	145
146	146	146	146
147	147	147	147
148	148	148	148
149	149	149	149
150	150	150	150

NO.	1	2	3
101	101	101	101
102	102	102	102
103	103	103	103
104	104	104	104
105	105	105	105
106	106	106	106
107	107	107	107
108	108	108	108
109	109	109	109
110	110	110	110
111	111	111	111
112	112	112	112
113	113	113	113
114	114	114	114
115	115	115	115
116	116	116	116
117	117	117	117
118	118	118	118
119	119	119	119
120	120	120	120
121	121	121	121
122	122	122	122
123	123	123	123
124	124	124	124
125	125	125	125
126	126	126	126
127	127	127	127
128	128	128	128
129	129	129	129
130	130	130	130
131	131	131	131
132	132	132	132
133	133	133	133
134	134	134	134
135	135	135	135
136	136	136	136
137	137	137	137
138	138	138	138
139	139	139	139
140	140	140	140
141	141	141	141
142	142	142	142
143	143	143	143
144	144	144	144
145	145	145	145
146	146	146	146
147	147	147	147
148	148	148	148
149	149	149	149
150	150	150	150

NO.	1	2	3
101	101	101	101
102	102	102	102
103	103	103	103
104	104	104	104
105	105	105	105
106	106	106	106
107	107	107	107
108	108	108	108
109	109	109	109
110	110	110	110
111	111	111	111
112	112	112	112
113	113	113	113
114	114	114	114
115	115	115	115
116	116	116	116
117	117	117	117
118	118	118	118
119	119	119	119
120	120	120	120
121	121	121	121
122	122	122	122
123	123	123	123
124	124	124	124
125	125	125	125
126	126	126	126
127	127	127	127
128	128	128	128
129	129	129	129
130	130	130	130
131	131	131	131
132	132	132	132
133	133	133	133
134	134	134	134
135	135	135	135
136	136	136	136
137	137	137	137
138	138	138	138
139	139	139	139
140	140	140	140
141	141	141	141
142	142	142	142
143	143	143	143
144	144	144	144
145	145	145	145
146	146	146	146
147	147	147	147
148	148	148	148
149	149	149	149
150	150	150	150

#### NOTES

1. ALL DIMENSIONS ARE IN METERS UNLESS OTHERWISE SPECIFIED.

2. ALL DIMENSIONS ARE TO FACE UNLESS OTHERWISE SPECIFIED.

3. ALL DIMENSIONS ARE TO FACE UNLESS OTHERWISE SPECIFIED.

4. ALL DIMENSIONS ARE TO FACE UNLESS OTHERWISE SPECIFIED.

5. ALL DIMENSIONS ARE TO FACE UNLESS OTHERWISE SPECIFIED.

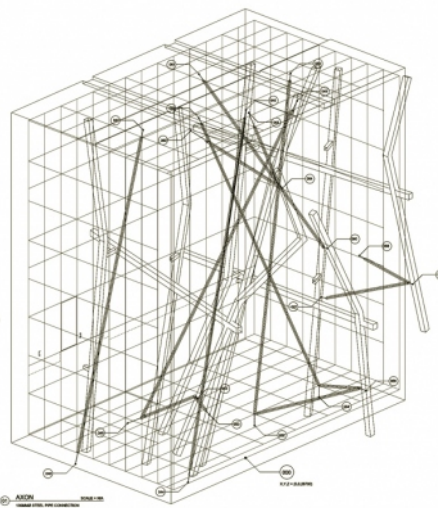
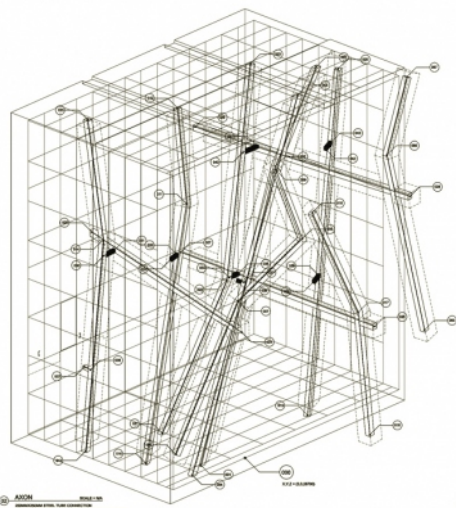
6. ALL DIMENSIONS ARE TO FACE UNLESS OTHERWISE SPECIFIED.

7. ALL DIMENSIONS ARE TO FACE UNLESS OTHERWISE SPECIFIED.

8. ALL DIMENSIONS ARE TO FACE UNLESS OTHERWISE SPECIFIED.

9. ALL DIMENSIONS ARE TO FACE UNLESS OTHERWISE SPECIFIED.

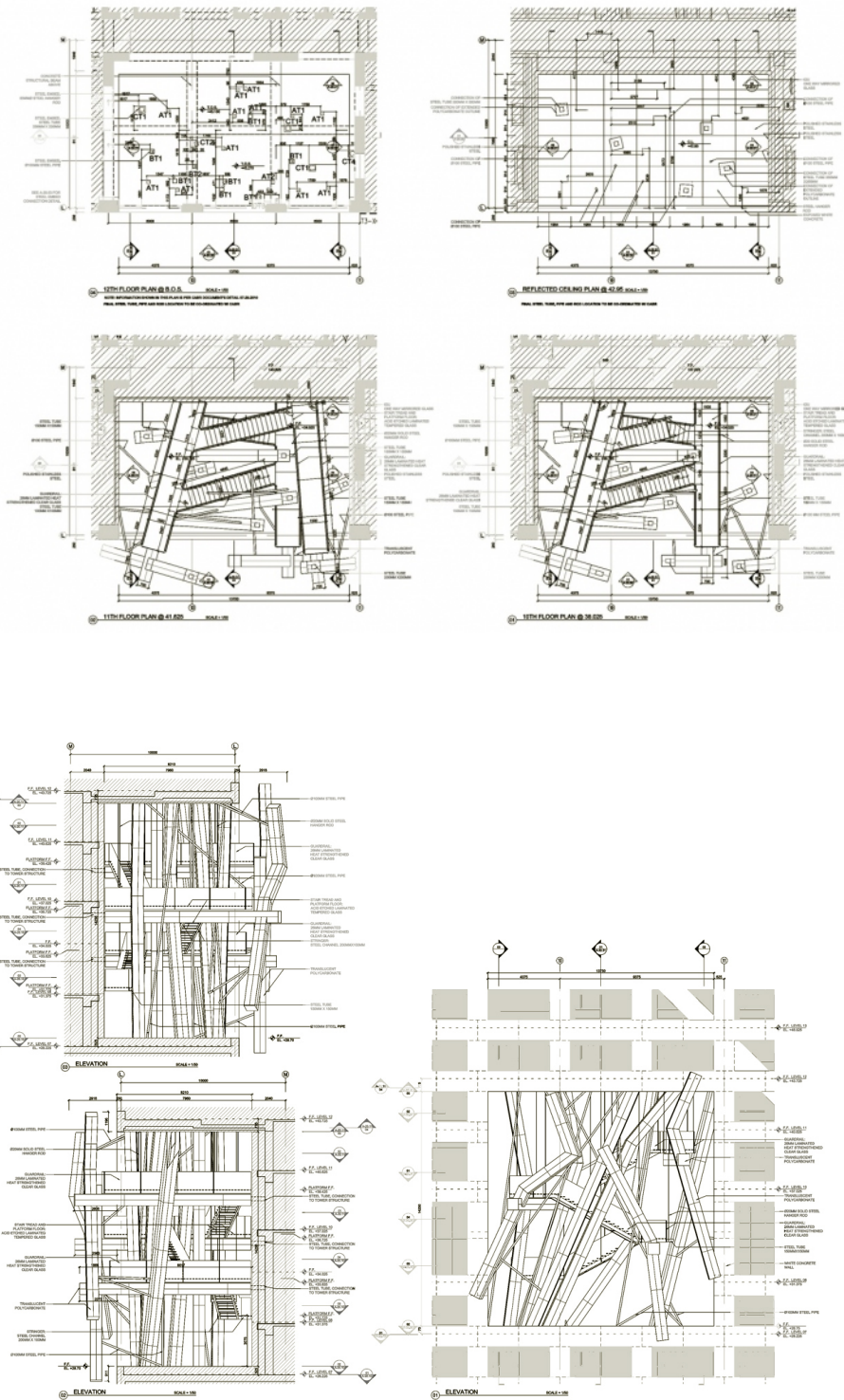
10. ALL DIMENSIONS ARE TO FACE UNLESS OTHERWISE SPECIFIED.



Wood, Lebbeus and Kumpusch, Christoph. "A SPACE OF LIGHT", *LW blog*, February 15, 2011

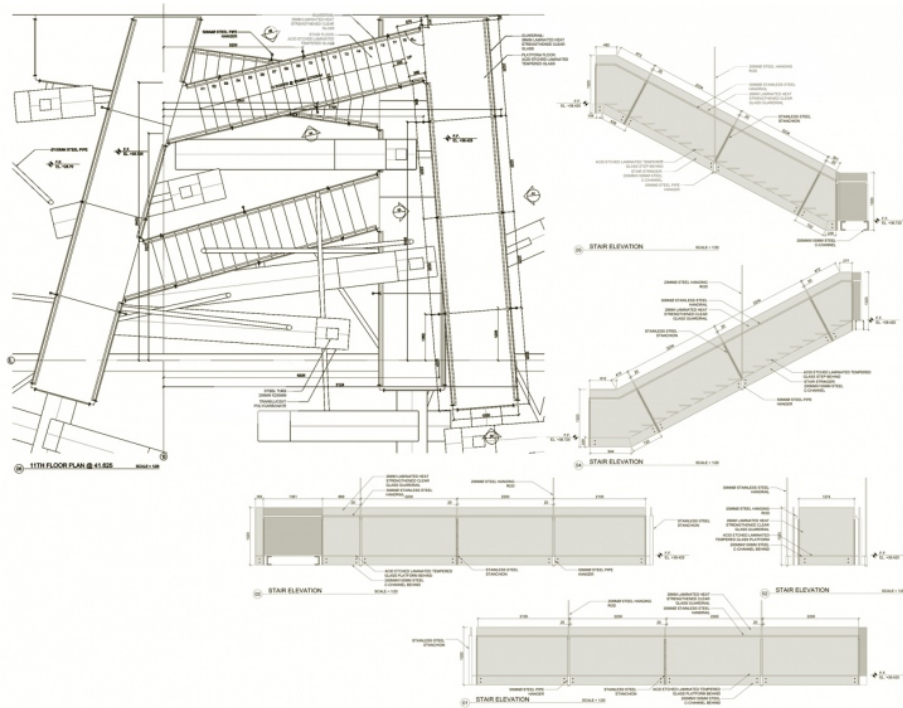
**FRIEDMAN BENDA** 515 W 26TH STREET NEW YORK NY 10001  
**FRIEDMANBENDA.COM** TELEPHONE 212 239 8700 FAX 212 239 8760





Wood, Lebbeus and Kumpusch, Christoph. "A SPACE OF LIGHT", *LW blog*, February 15, 2011

**FRIEDMAN BENDA** 515 W 26TH STREET NEW YORK NY 10001  
**FRIEDMANBENDA.COM** TELEPHONE 212 239 8700 FAX 212 239 8760



Wood, Lebbeus and Kumpusch, Christoph. "A SPACE OF LIGHT", *LW blog*, February 15, 2011

**FRIEDMAN BENDA** 515 W 26TH STREET NEW YORK NY 10001  
**FRIEDMANBENDA.COM** TELEPHONE 212 239 8700 FAX 212 239 8760

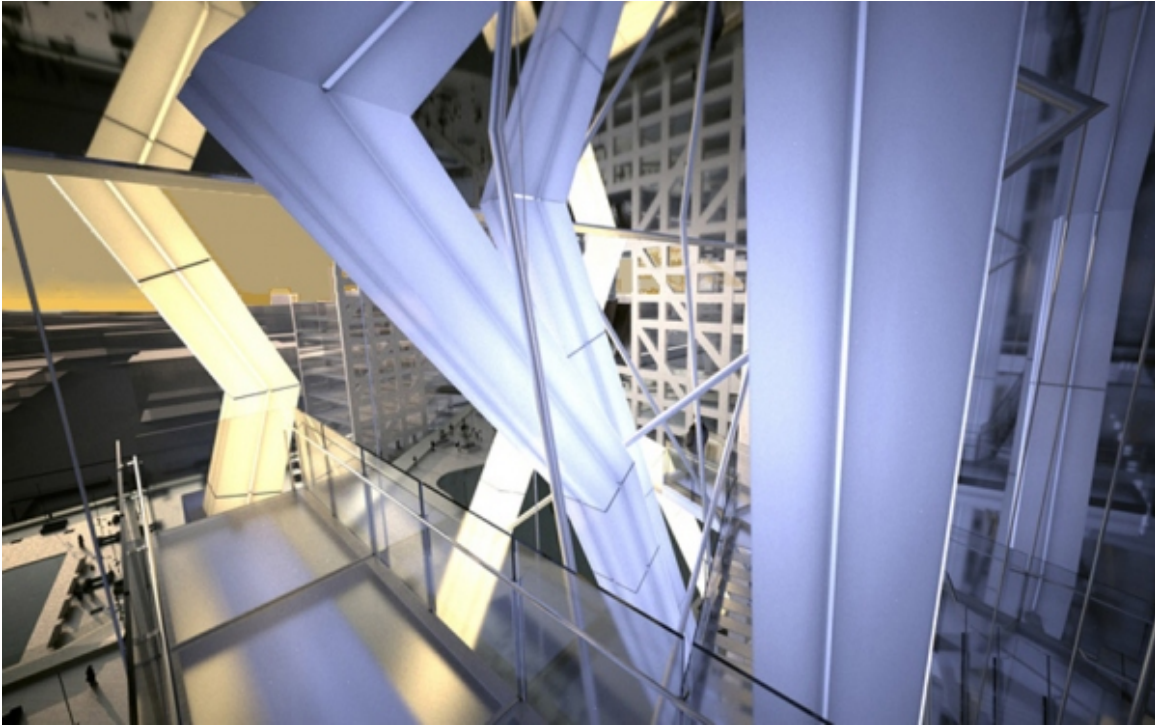






Wood, Lebbeus and Kumpusch, Christoph. "A SPACE OF LIGHT", *LW blog*, February 15, 2011

**FRIEDMAN BENDA** 515 W 26TH STREET NEW YORK NY 10001  
FRIEDMANBENDA.COM TELEPHONE 212 239 8700 FAX 212 239 8760



Wood, Lebbeus and Kumpusch, Christoph. "A SPACE OF LIGHT", *LW blog*, February 15, 2011

**FRIEDMAN BENDA** 515 W 26TH STREET NEW YORK NY 10001  
FRIEDMANBENDA.COM TELEPHONE 212 239 8700 FAX 212 239 8760