

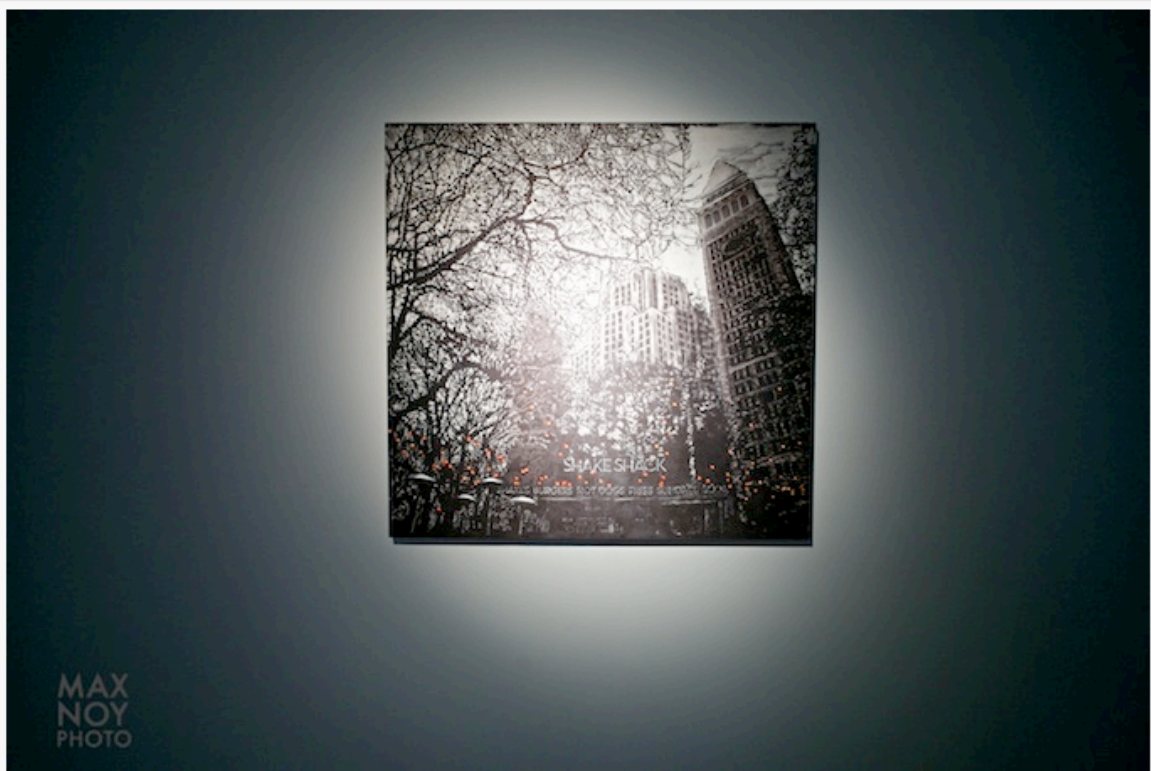
ARTE FUSE

PICTURE THIS: I Love The Nightlife at Friedman Benda



Frozen in Rapt Admiration at the work of Ena Swansea

New York is the kind of city where you don't know where the night will take you but it promises to be a great one. One such artist dared to make the stark and seductive statement of that fact with her latest show that opened last January 24th. **Ena Swansea** showcased her large scale paintings of *untitled nightlife*. Fluxing between abstract and representational, her paintings evoked the spirit of Toulouse Lautrec's depiction of Paris nightlife at Moulin Rouge. In the cool blues and swirls of the fantastical world Swansea created that everyone seemed to get lost in the allure and shrouding beauty of the night. Also available were a custom sofa and a ceiling installation that further pumped up the volume. Well, let the night take you where it wants to go but in our case, a great looking art show is always the ticket and worth doing the walk of shame the next day.



Ena Swansea at Friedman Benda Gallery



Ena Swansea (2nd from left) shows off her art to curious guests



The artist Ena Swansea (R) with a guest lounging about at her opening

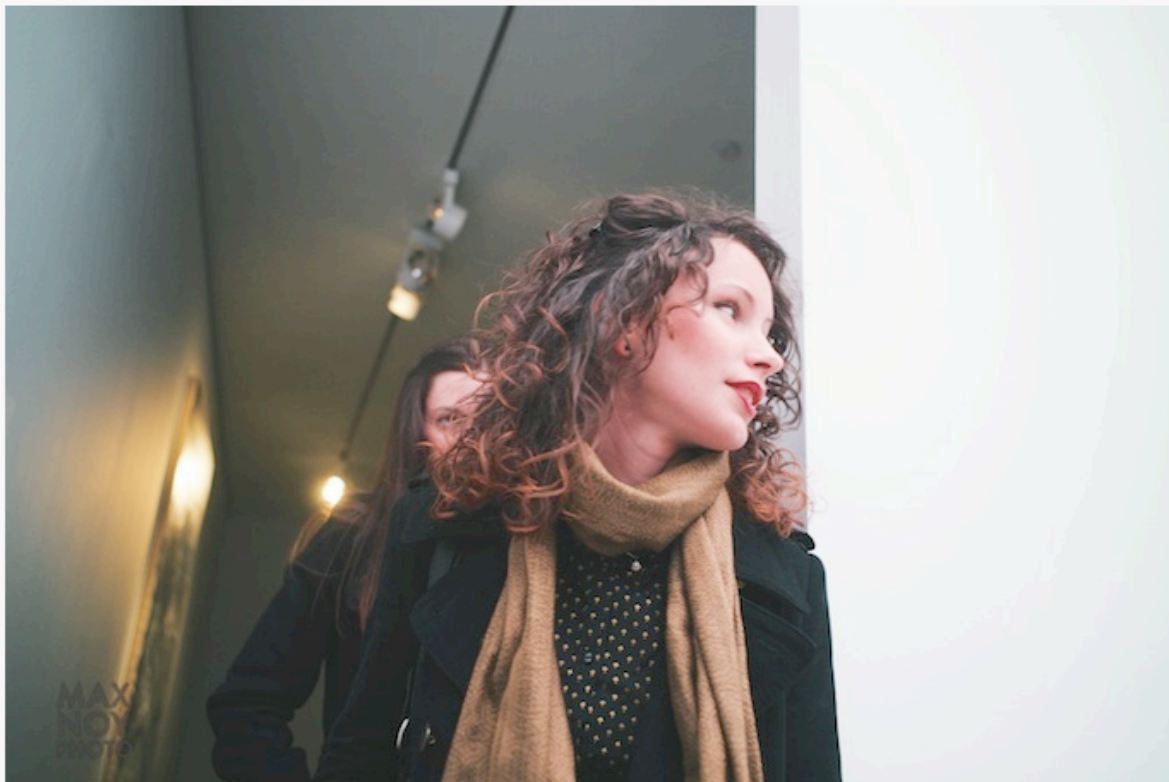


Cheers to ART night in Chelsea at Friedman Benda

Laluyan, Oscar. "Picture This: I love the nightlife at Friedman Benda," *Arte Fuse*. January 28, 2014.
FRIEDMAN BENDA 515 W 26TH STREET NEW YORK NY 10001



A night of art in Chelsea at Friedman Benda



Turn the corner and you might see great Art that can change your life

Laluyan, Oscar. "Picture This: I love the nightlife at Friedman Benda," *Arte Fuse*. January 28, 2014.
FRIEDMAN BENDA 515 W 26TH STREET NEW YORK NY 10001